

Name Student A Date 9-12-08 Hour 1

Pre-test for Penguin Unit

1. What is a point? Describe it.

I don't know

0/4

0/5

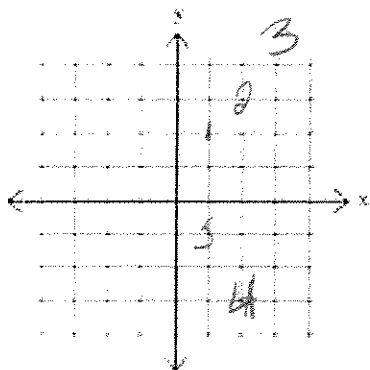
2. What are the x and y-axis?

things that are
on a graph.

3. Define the word *slope*.

I don't
know

4. Place the following points on the provided graph: ~~(2,3)~~ ~~(3,4)~~ ~~(4,4)~~ ~~(-3,2)~~ ~~(2,-1)~~

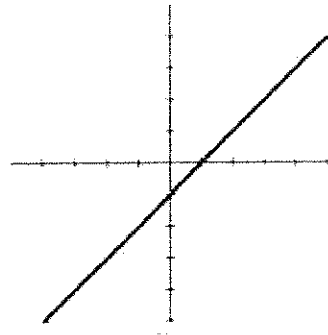


8. What quadrant of the coordinate plane is the point $(3, 5)$ in?

I DK

9. Is the following graph linear?

I dont know



Name Student A

Date _____ Hour _____

Test for Penguin Unit

1. What is a point? Describe it.

0 points

x, y

3/6

Good

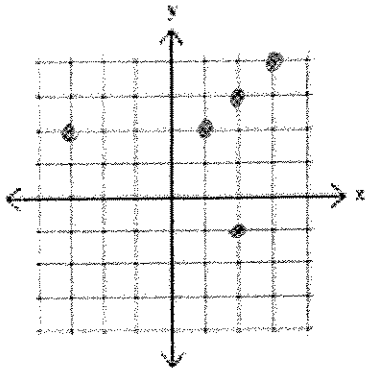
2. What are the x and y-axis?

Idk

3. Define the word *slope*.

Idk

4. Place the following points on the provided graph: $(2,3)$ $(3,4)$ $(4,4)$ $(-3,2)$ $(2,-1)$

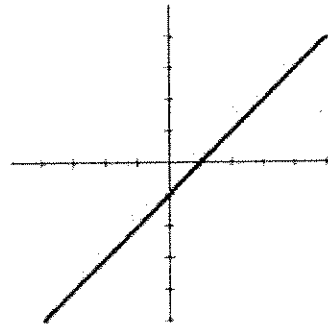


5. What quadrant of the coordinate plane is the point (3,5) in?

I

6. Is the following graph linear?

yes



Name: Student B

Date 9-12-08

Hour 1st

Pre-test for Penguin Unit

4/6

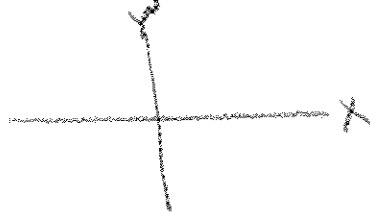
66.7%

1. What is a point? Describe it.

something on a graph to show where something is.

2. What are the x and y-axis?

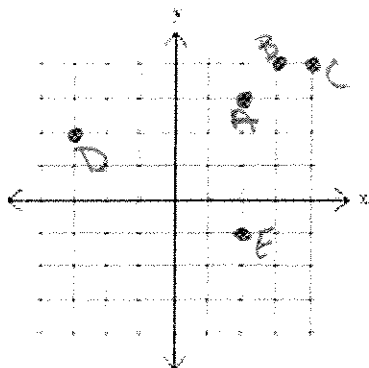
They can show specific areas on a graph



3. Define the word *slope*.

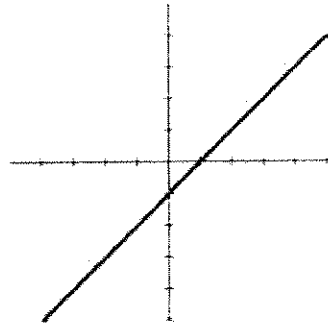
to be oblique

4. Place the following points on the provided graph: A (2,3) B (3,4) C (4,4) D (-3,2) E (2,-1)



5. What quadrant of the coordinate plane is the point $(3, 5)$ in?

6. Is the following graph linear?



no

Name: Student B Date 9-18-08 Hour 1st

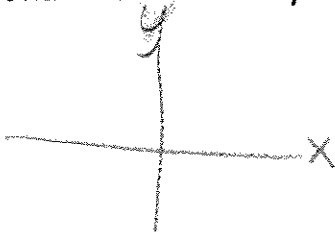
Test for Penguin Unit

6/6 (100%)

1. What is a point? Describe it.

0-dimensional
location on a graph/coordinate plane
(x, y)

2. What are the x and y-axis?

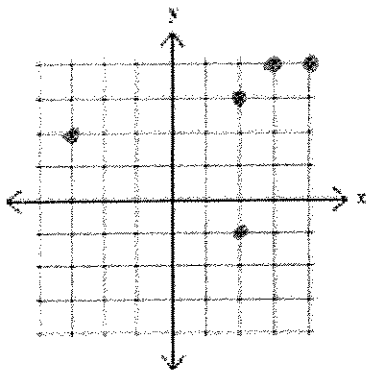


y - vertical
x - horizontal

3. Define the word *slope*.

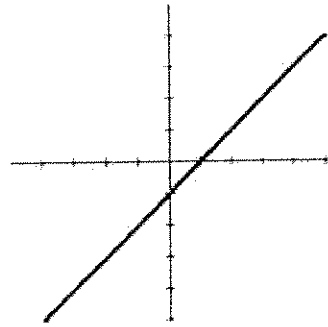
$$\text{Slope} = \frac{y}{x} = \frac{\text{rise}}{\text{run}}$$

4. Place the following points on the provided graph: ~~(2,3)~~ ~~(3,4)~~ ~~(4,4)~~ ~~(-3,2)~~ ~~(2,-1)~~



5. What quadrant of the coordinate plane is the point $(3,5)$ in?

6. Is the following graph linear?



yes